

NOTE : THE THICKNESS OF CONCRETE REMOVED SHALL NOT BE LESS THAN 150mm IN ANY CASE.

NOTE: EXISTING REINFORCEMENT NOT SHOWN FOR CLARITY

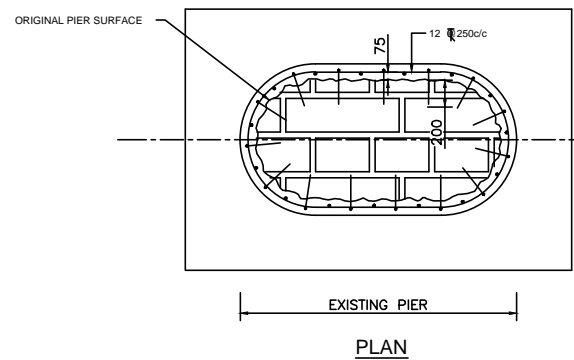
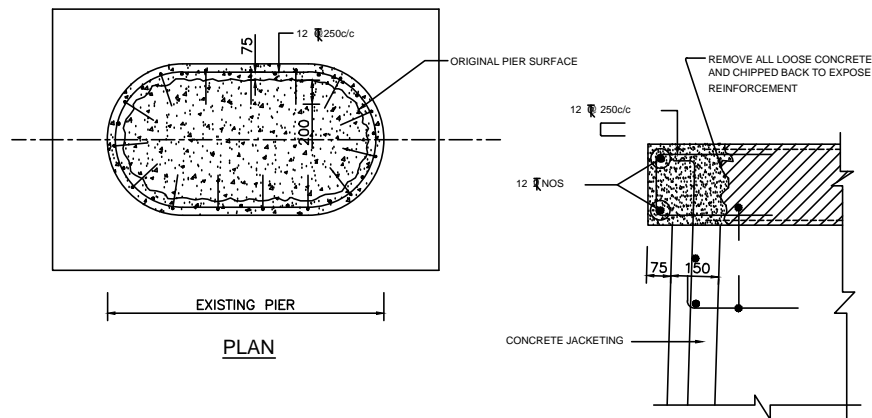
JACKETING NOTES :

PRIOR TO POURING THE CONCRETE OF THE CC/MASONRY PIER AND ABUTMENT JACKETS AND ALL THE CAPS:

1. REMOVE FREE EXPOSED REINFORCEMENT OF CAP.
- * REMOVE LOOSE MATERIAL/DUST BY SAND BLASTING FOR EXPOSED CONCRETE SURFACE AND REINFORCEMENT AS PER SPECIFICATION.
2. REPLACE IF CAP REINFORCEMENT CORRODED BADLY OR MISSING AFTER CERTIFYING WITH ENGINEER.
- * INSTALL APPROPRIATE DOWELS EMBEDDED WITH EPOXY MORTAR TO LAP WITH THE NEW BARS WHERE REQUIRED AS DIRECTED BY ENGINEER AND AS PER ADDITIONAL SPECIFICATION.
- * THE SIZE AND SPACING OF DOWELS SHALL MATCH THE ORIGINAL DESIGN.
3. APPLY CONCRETE PRIMER AS PER SPECIFICATION TO PREPARE CONCRETE SURFACE.
- * APPLY NITAZINC PRIMER OF FOSROC (OR APPROVED EQUIVALENT)
4. PROVIDE WATER-TIGHT FORM WORK ALL AROUND THE PIER/ABUTMENT AND CAP.
5. POUR M30 CONCRETE IN PIER/ABUTMENT & CAP AND COMPACT IT AS PER SPECIFICATION.

NOTES:

1. ALL DIMENSIONS ARE IN MILLIMETERS UNLESS NOTED OTHERWISE.
2. DIMENSIONS ARE NOT TO BE SCALED. ONLY WRITTEN DIMENSIONS SHALL BE FOLLOWED.
3. CONCRETE SHALL BE OF GRADE M30.
4. SIMILAR JACKETING METHODOLOGY TO BE ADOPTED FOR ABUTMENT, WHERE ONLY THE EXPOSED FACE OF MEMBER WOULD BE JACKETED.



DETAIL OF C.C. JACKETING

SCALE : NOT TO SCALE

DEPUTY EXECUTIVE ENGINEER
STATE ROAD PROJECT DIVISION
RAJKOT

EXECUTIVE ENGINEER
STATE ROAD PROJECT DIVISION
RAJKOT

STATE ROAD PROJECT DIVISION
RAJKOT

GOVERNMENT OF GUJARAT
ROADS AND BUILDINGS DEPARTMENT

SAVARKUNDLA – DHASA ROAD SH 021 & 236
ROAD MAINTENANCE PROGRAMME

DATE: PROJECT: DWG No: REV: